

M6EeePC 與 Clonezilla 合體而成的還原光碟

請下載位於 <ftp://140.111.128.66/OSSII/EeePC/Images> 下的檔案，iso 檔是給 LiveDVD 用的，zip 檔則是用來作 LiveUSB 製作方式請參考國網中心的說明 <http://drbl.nchc.org.tw/clonezilla/> (感謝國網中心做出 DRBL / CloneZilla，這是台灣少數能名揚國際的 OSS 計畫) 完成 DVD 燒錄或 LiveUSB 製作後，請用外接的方式由 DVD 或 LiveUSB 開機。

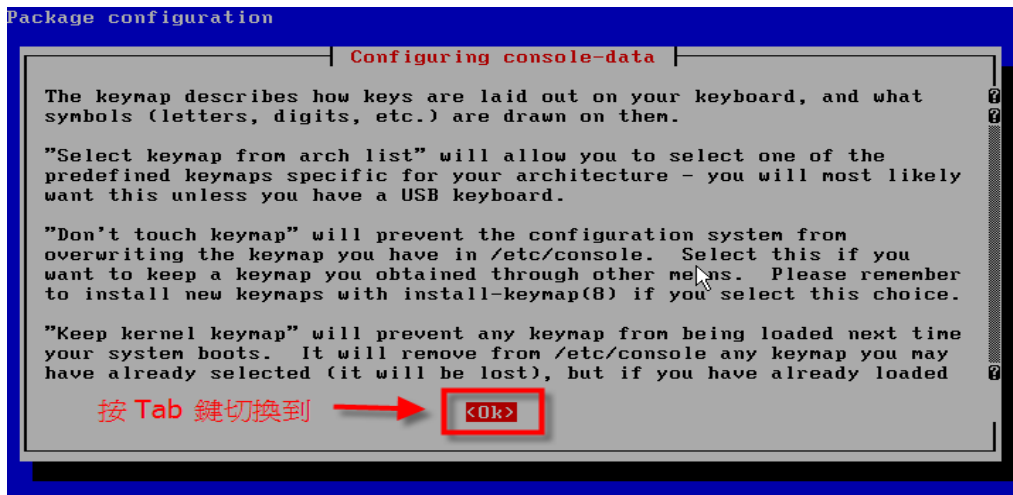
首先會看到以下的畫面：



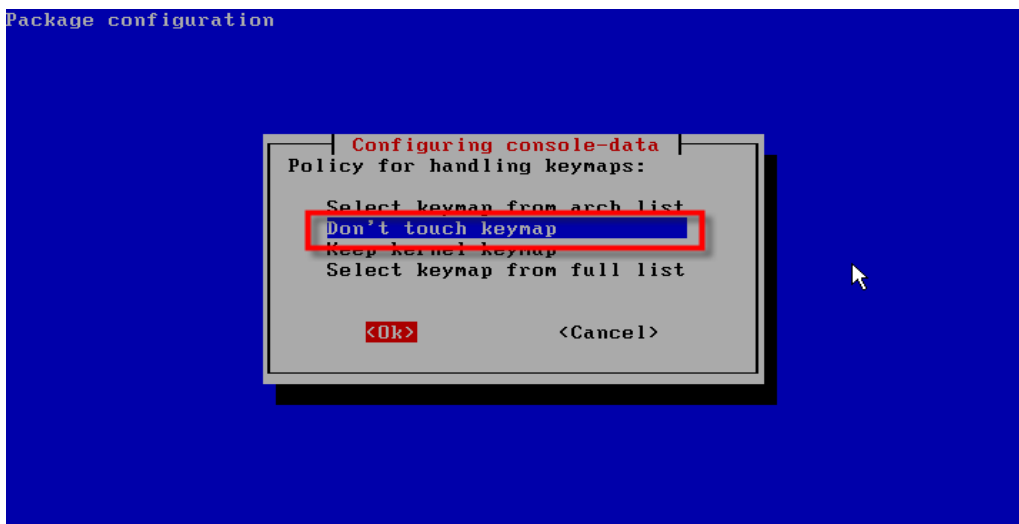
按 Enter 選用預設值即可。隨即會進入開機程序，如下圖：

```
done.
Loading device-mapper supportdevice-mapper: ioctl: 4.11.0-ioctl (2006-10-12) ini
tialised: dm-devel@redhat.com
.
Setting up LVM Volume Groups...
  Reading all physical volumes.  This may take a while...
  No volume groups found
  No volume groups found
  No volume groups found
Checking file systems...fsck 1.40-WIP (14-Nov-2006)
done.
Setting kernel variables...done.
Mounting local filesystems...done.
Activating swapfile swap...done.
Setting up networking...
Configuring network interfaces...done.
Starting portmap daemon...
Setting console screen modes and fonts.
INIT: Entering runlevel: 2
Starting portmap daemon...Already running..
* Not starting internet superserver: no services enabled.
Not starting udftools packet writing: No devices listed in /etc/default/udftools
Starting NFS common utilities: statd.
Preparing Clonezilla program...
```

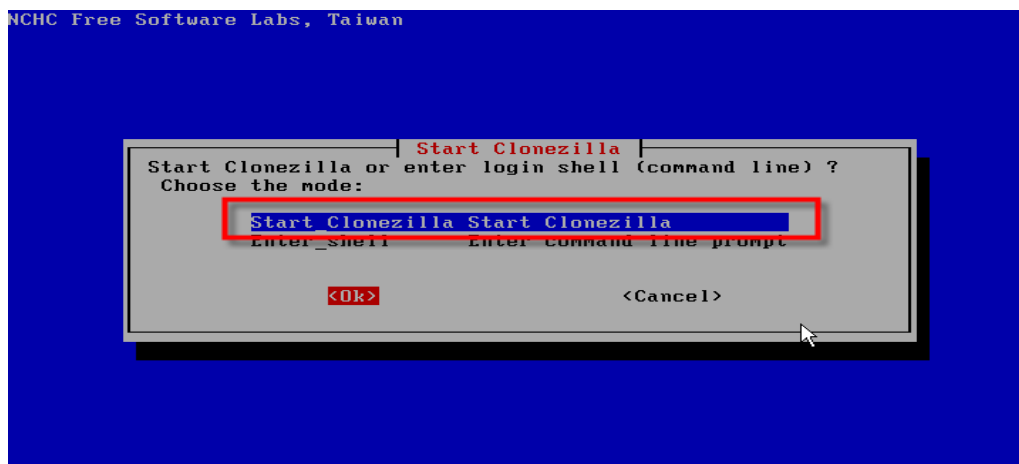
完成開機後即進入 Clonezilla 的還原操作。首先是說明的部份。
(由於 Clonezilla 利用 Framebuffer 提供中文操作介面，預設的 vga=788 無法適用於 EeePC 的環境，如果你想用中文介面，須重製 DVD 或 USB，將 vga 指定為 785)



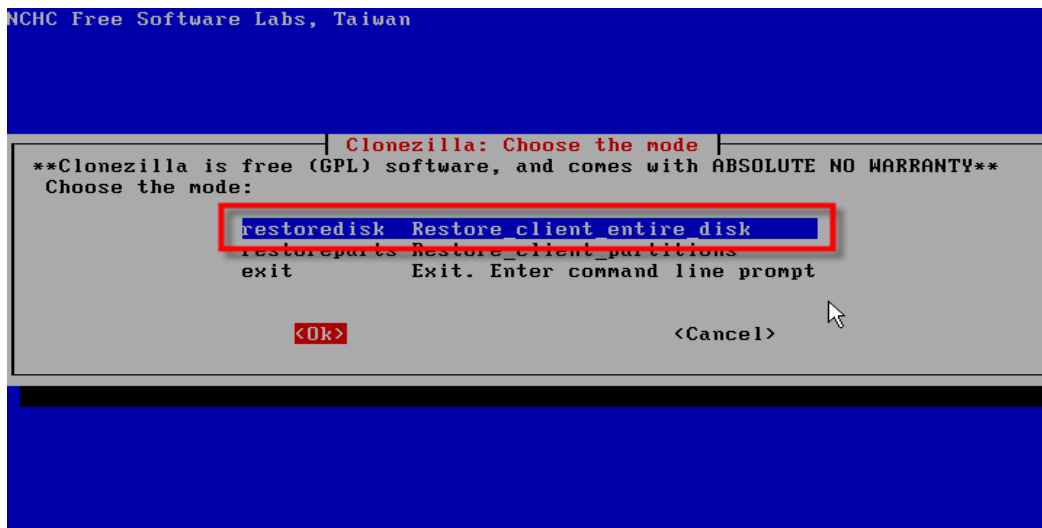
用 Tab 鍵切換不同選項的 Tag，用 [Space] 鍵選取設定值。



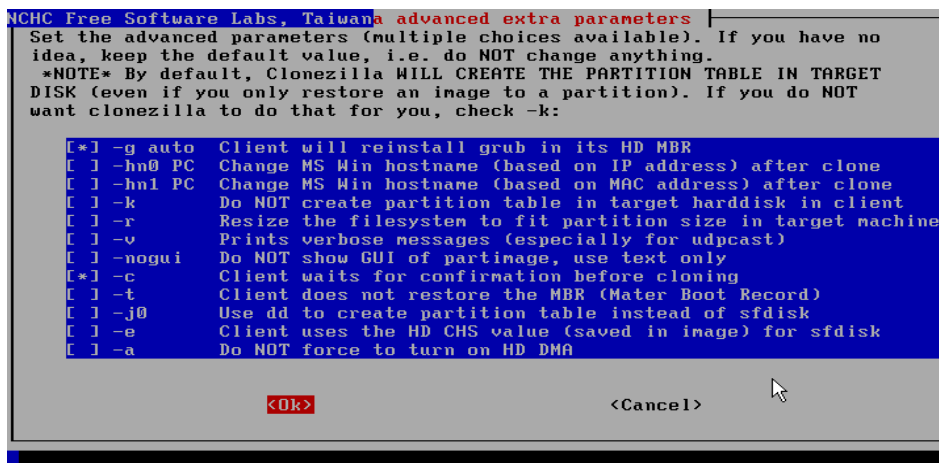
選 Do'nt touch keymap 除非你的鍵盤排列不同。



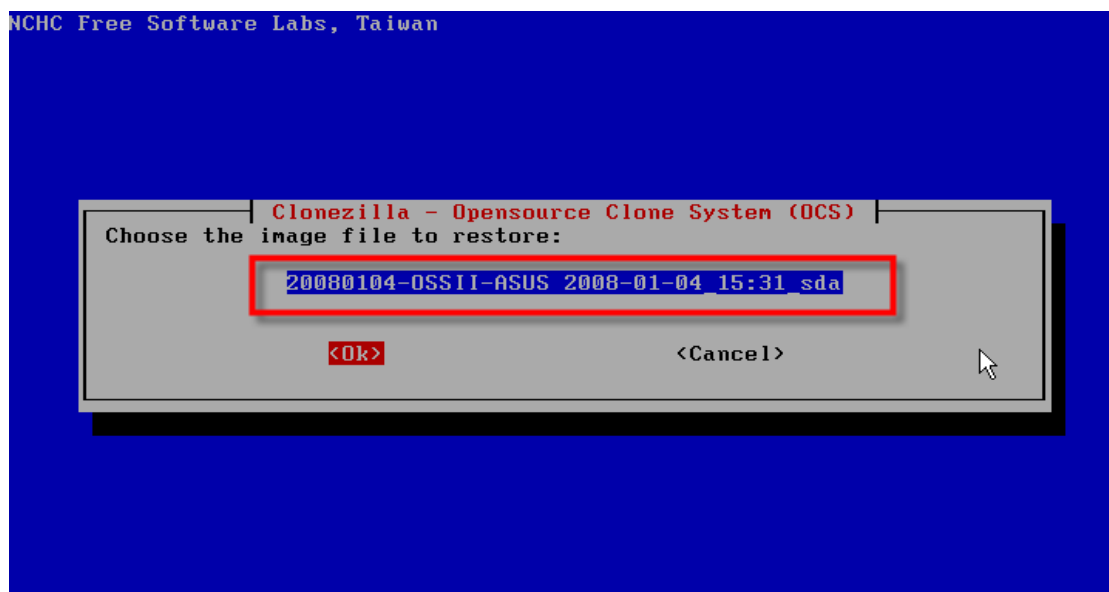
啓動 Clonezilla。



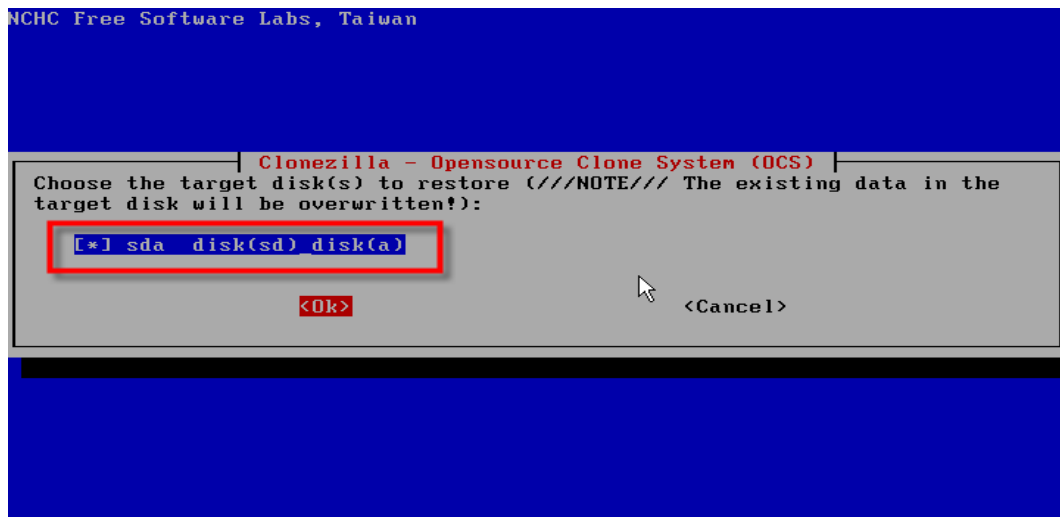
選擇 [還原硬碟] (restoredisk)



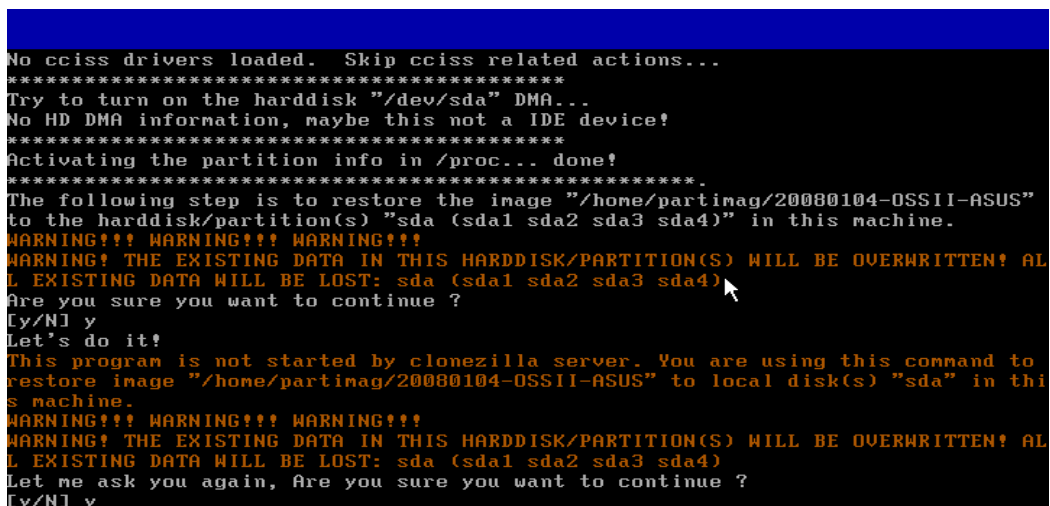
不需更動任何選項，直接用 Tab 鍵選 OK



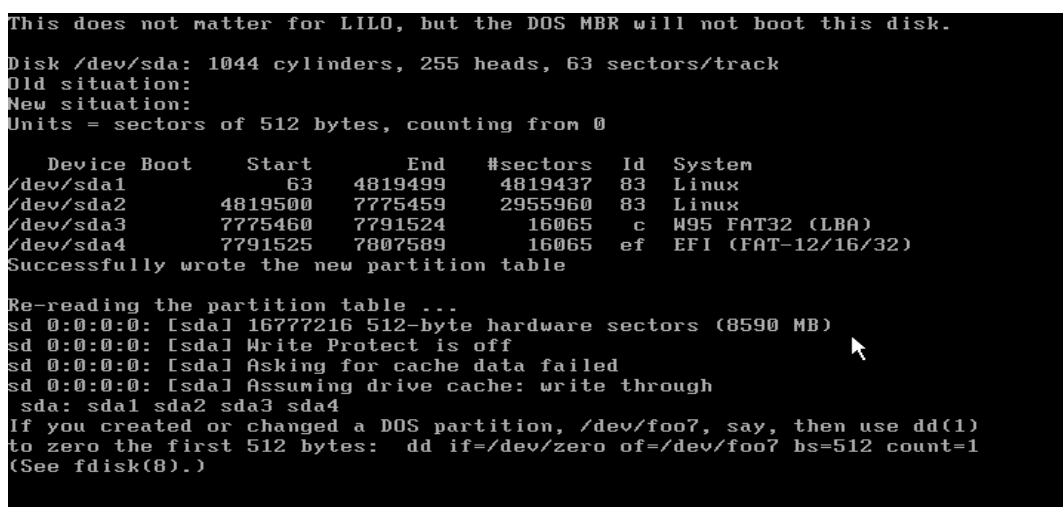
選擇要還原的 image



選擇目標硬碟 (EeePC 只有一顆 /dev/sda)



問題回答全部選 y




Clonezilla 開始執行系統還原。

```
restore partition from image file
Partition to restore:...../dev/sda1
Size of partition to restore:....2.30 GiB = 2467551744 bytes
Current image file:.....stdin
File system:.....ext2fs

Partition was on device:...../dev/sda1
Image created on:.....Fri Jan  4 14:38:37 2008
Size of the original partition:..2.30 GiB = 2467551744 bytes

Time elapsed:.....16sec
Estimated time remaining:.....12m:32sec
Speed:.....169.07 MiB/min
Data copied:.....45.09 MiB / 2.12 GiB
```




copying used data blocks [* to cancel, CtrlS to pause, CtrlQ to resume]

```
restore partition from image file
Partition to restore:...../dev/sda1
Size of partition to restore:....2.30 GiB = 2467551744 bytes
Current image file:.....stdin
File system:.....ext2fs

Partition was on device:...../dev/sda1
Image created on:.....Fri Jan  4 14:38:37 2008
Size of the original partition:..2.30 GiB = 2467551744 bytes

Time elapsed:..... 6m:38sec
Estimated time remaining:..... 3m:59sec
Speed:.....203.98 MiB/min
Data copied:.....1.32 GiB / 2.12 GiB
```




copying used data blocks [* to cancel, CtrlS to pause, CtrlQ to resume]

```
restore partition from image file
Partition to restore:...../dev/sda2
Size of partition to restore:....1.41 GiB = 1513451520 bytes
Current image file:.....stdin
File system:.....ext3fs

Partition was on device:...../dev/sda2
Image created on:.....Fri Jan  4 15:21:10 2008
Size of the original partition:..1.41 GiB = 1513451520 bytes

Time elapsed:.....21sec
Estimated time remaining:..... 1m:33sec
Speed:.....296.43 MiB/min
Data copied:.....103.75 MiB / 564.91 MiB
```



copying used data blocks [* to cancel, CtrlS to pause, CtrlQ to resume]

```
Finished!
Now syncing - flush filesystem buffers...

*****
If you want to use clonezilla again:
0. Run "sudo su -" to become root
1. If you want to use a terminal with Traditional Chinese support, run:
   tw-bterm
2. Then run this to use clonezilla:
   ocs-live
3. When everything is done, remember to use 'poweroff' or 'reboot' to do a normal
   poweroff/reboot procedure. Otherwise if the boot media you are using is a writa
   ble device (such as USB flash drive), and it's mounted, poweroff/reboot in abnor
   mal procedure might make it FAIL to boot next time!

NOTE! The above hints might disappear after you press Enter key and terminal end
s. To see this message again, run:
   ocs-live-help
*****
Press "Enter" to continue...
Now you can choose to:
(0) Poweroff
(1) Reboot
(2) Enter command line prompt
[2] 1_
```

完成後，選擇 Reboot，然後移除外接的 DVD 或 USB，重新開機後就可以看到 M6EeePC 了。Root 的 Passwd 為 ossii2007，網路含 Wifi 都已經 OK，攝影機也沒問題。目前初步釋出的 image 是 GNOME 介面，OpenOffice.org 係最新的版本，由晟鑫科技修改自 OpenOffice.org 2.3.1，正式命名為晟鑫 Office。

